

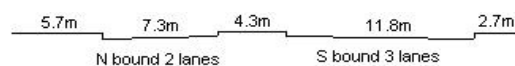
YEAR 2018

CORE STATION 1009

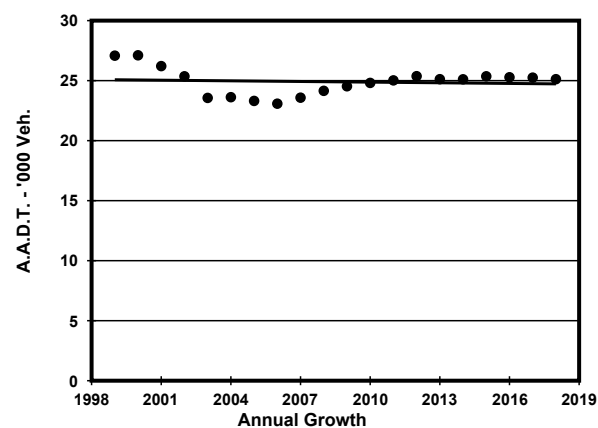
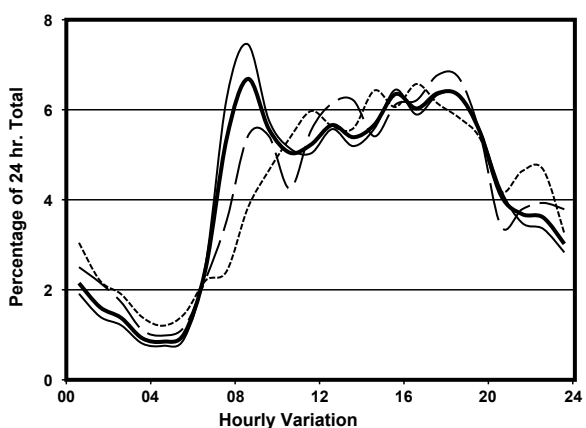
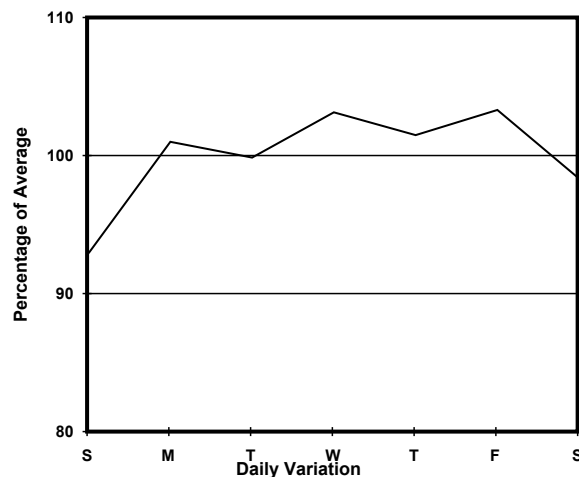
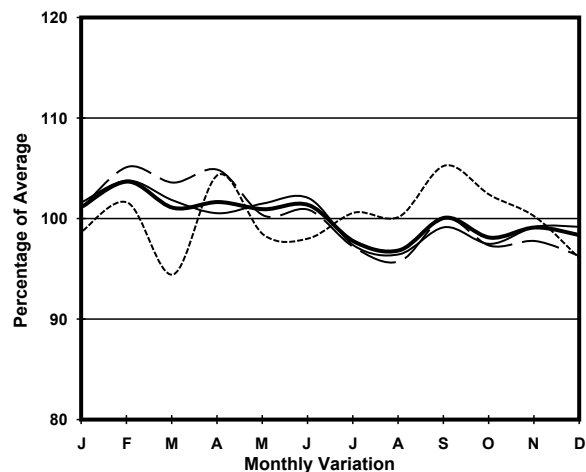
ROAD NETWORK MAJOR

ROAD TYPE PRIMARY DISTRIBUTOR

LINK CHAI WAN RD (from ISLAND EASTERN CORRIDOR APPROACH to TAI TAM RD)



1. TRAFFIC FLOW VARIATION AND GROWTH



2. TRAFFIC CHARACTERISTICS (BY DIRECTION)

Parameter	All - Day	Mon. - Fri.	Sat.	Sun.
SOUTH BOUND				
A.A.D.T.	12560	12780	12410	11940
R 12 / 24 - %	67.3	68.5	66.6	62
R 16 / 24 - %	85.2	86.3	83.6	81.3
AM Peak Hour	0800-0900	0800-0900	0800-0900	0900-1000
One-way flow at AM peak hour	830	940	710	520
T - % (AM)	-	8.8	-	-
PM Peak Hour	1800-1900	1800-1900	1600-1700	1700-1800
One-way flow at PM peak hour	730	770	810	660
T - % (PM)	-	11.9	-	-
Prop.of commercial vehicles - 16 hr.	-	12.7	-	-
NORTH BOUND				
A.A.D.T.	12560	12880	12360	11520
R 12 / 24 - %	72	73.5	68.9	67
R 16 / 24 - %	87.9	88.9	85	85.5
AM Peak Hour	0800-0900	0800-0900	0900-1000	0900-1000
One-way flow at AM peak hour	850	970	680	570
T - % (AM)	-	12.1	-	-
PM Peak Hour	1700-1800	1700-1800	1800-1900	1600-1700
One-way flow at PM peak hour	960	990	1020	990
T - % (PM)	-	11.3	-	-
Prop.of commercial vehicles - 16 hr.	-	13.4	-	-

3. OTHER INFORMATION AND COMMENT

4. Vehicle classification and occupancy - Monday to Friday

Time		Class of vehicle									
		Motor Cycle	Private Car	Taxi	Private LB	PLB	Goods veh.		Non Fr. Bus	Fr. Bus	
							Light	M & H		SD	DD
0700-0800	Pro	4.2	33.4	23.7	4.2	10.4	5.2	0.3	6.6	0.3	11.7
	Ocp	1.0	1.3	2.2	9.1	7.7	2.2	5.0	12.8	27.0	43.3
0800-0900 Peak hour	Pro	3.9	50.8	19.7	1.5	6.9	6.7	0.4	2.2	0.3	7.5
	Ocp	1.0	1.3	2.2	3.6	10.6	2.0	1.0	4.9	26.8	47.2
0900-1000	Pro	3.3	42.5	22.5	2.2	5.4	13.0	0.5	1.1	0.1	9.4
	Ocp	1.0	1.3	2.5	3.1	10.7	1.7	1.5	30.3	28.0	26.3
1000-1100	Pro	3.8	34.6	20.2	1.5	7.0	19.9	1.2	2.6	0.2	8.9
	Ocp	1.1	1.3	2.1	3.2	10.1	1.7	1.5	15.7	18.7	23.9
1100-1200	Pro	3.8	32.5	24.2	3.8	7.3	14.9	1.7	1.7	0.1	10.1
	Ocp	1.0	1.5	2.6	2.6	9.5	1.7	1.4	10.4	13.0	23.8
1200-1300	Pro	3.7	42.4	14.9	3.1	7.8	12.9	0.7	3.7	0.3	10.5
	Ocp	1.0	1.5	2.7	3.3	9.3	1.6	2.0	7.8	22.3	23.3
1300-1400	Pro	5.3	36.5	22.4	2.5	9.4	11.8	0.6	2.5	0.1	8.9
	Ocp	1.0	1.5	2.3	1.9	10.6	1.6	2.5	5.4	8.0	26.3
1400-1500	Pro	3.6	34.8	24.7	1.3	8.5	13.0	2.0	2.0	0.3	9.8
	Ocp	1.0	1.4	2.3	2.3	9.3	1.6	1.7	3.2	8.3	25.9
1500-1600	Pro	5.4	32.4	26.5	3.9	7.6	11.6	1.4	2.8	0.0	8.4
	Ocp	1.2	1.4	2.0	2.0	8.4	1.5	1.8	8.0	0.0	34.2
1600-1700	Pro	3.9	39.8	18.9	3.1	7.5	12.9	0.5	5.2	0.3	8.0
	Ocp	1.1	1.5	2.1	3.7	8.7	1.7	2.5	15.3	23.3	37.9
1700-1800	Pro	4.4	43.3	22.8	1.6	8.3	8.0	0.0	2.9	0.3	8.5
	Ocp	1.0	1.5	2.2	4.3	12.3	1.9	0.0	8.1	29.0	46.5
1800-1900	Pro	4.9	49.0	18.7	0.8	8.1	6.8	0.0	1.9	0.2	9.6
	Ocp	1.1	1.4	2.1	1.3	11.2	1.6	0.0	6.7	20.0	47.7
1900-2000	Pro	3.8	45.2	24.6	1.3	8.8	3.8	0.0	1.3	0.2	11.0
	Ocp	1.3	1.4	1.7	1.8	9.3	1.3	0.0	5.0	16.0	38.2
2000-2100	Pro	2.6	45.8	29.2	0.7	4.8	4.1	0.4	0.0	0.2	12.2
	Ocp	1.1	1.4	2.2	3.0	8.6	1.6	2.0	0.0	19.0	27.7
2100-2200	Pro	4.0	36.1	31.6	1.0	7.5	4.5	1.0	0.0	0.1	14.2
	Ocp	1.1	1.6	1.8	3.0	4.7	1.9	2.0	0.0	34.0	28.5
2200-2300	Pro	4.3	38.1	33.8	0.5	7.2	1.9	0.0	0.0	0.4	13.8
	Ocp	1.1	1.6	1.9	2.0	7.9	3.0	0.0	0.0	14.7	28.1
16 hours	Pro	4.1	40.4	23.0	2.1	7.7	9.8	0.7	2.4	0.2	9.8
	Ocp	1.1	1.4	2.2	3.5	9.5	1.7	1.8	10.4	21.1	33.5

Legend

Pro. Proportion of vehicles in % (Sum may not add up to 100% due to figure rounding)*

Ocp. Average occupancy of vehicles including both driver and passengers*

M&H Medium and Heavy

***** All traffic data are collected from combined bounds except for one way traffic